

ADDENDUM NUMBER 4

July 28, 2023

**PROJECT: SHELBY COUNTY JAIL EXPANSION
FOR THE SHELBY COUNTY COMMISSION
COLUMBIANA, ALABAMA
GMC PROJECT NO. AMGM220005
Local Funds**

AD4-1 GENERAL:

- A. The following revisions and/or additions to the Drawings and Project Manual are hereby made a part of same, and shall be incorporated in the Work of the Contract the same as if originally included in the Bid and Construction Documents.
- B. Bidders shall acknowledge receipt of this Addendum in writing, as provided on the Proposal Form.
- C. When a revision and/or addition is called for to the Drawings or Project Manual, they shall be fully coordinated with and carried through all applicable Drawings and portions of the Project Manual, including in part, all related Civil, Landscaping, Architectural, Structural, Plumbing, Mechanical, Electrical, and other Documents.

AD4-2 PROJECT MANUAL AND SPECIFICATIONS:

- A. Refer to Advertisement for Bids and Addendum No.1 and change the Bid Date only to Tuesday, August 8, 2023.

AD4-3 DRAWINGS:

- A. TT001 – TELECOMMUNICATIONS SYMBOLS, ABBREVIATIONS AND GENERAL NOTES
 - a. Replace sheet in its entirety to clarify symbol legend
- B. TT101C – NOTATION FLOOR PLAN – GROUND LEVEL – AREA A - TELECOMMUNICATION
 - a. Replace sheet in its entirety for added outlets

AD4-4 MISCELLANEOUS:

- A. NONE

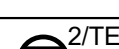





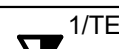
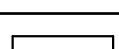


END OF ADDENDUM NUMBER 4

PREPARED BY

GMC

2660 EastChase Lane, Suite 200 | Montgomery, Alabama 36117
Tel 334.271.3200 | **GMCNETWORK.COM**
Goodwyn, Mills and Cawood, Inc.



TELECOMMUNICATIONS SYMBOLS LEGEND						
SYMBOL	DESCRIPTION	WIRING REQUIREMENTS	MINIMUM CONDUIT SIZE	BACKBOX	MOUNTING HEIGHT	NOTES
 2TE	CEILING MOUNTED DATA OUTLET	(2) CATEGORY 6 UTP	1"	2 GANG	CEILING	N/A
 2TE	FLOOR MOUNTED TELE/DATA OUTLET	(2) CATEGORY 6 UTP	1"	FLOOR BOX	FLOOR	N/A
 2TE	WALL MOUNTED TELE/DATA OUTLET	(2) CATEGORY 6 UTP	1" STUB ABOVE ACCESSIBLE CEILING	2 GANG W/SINGLE GANG PLASTER RING	18" AFF UNO	N/A
 1TE	CEILING MOUNTED DATA OUTLET	(1) CATEGORY 6 UTP	1"	2 GANG	CEILING	N/A
 1TE	FLOOR MOUNTED TELE/DATA OUTLET	(1) CATEGORY 6 UTP	1"	FLOOR BOX	FLOOR	N/A
 1TE	WALL MOUNTED TELE/DATA OUTLET	(1) CATEGORY 6 UTP	1" STUB ABOVE ACCESSIBLE CEILING	2 GANG W/SINGLE GANG PLASTER RING	18" AFF UNO	N/A
	CABLE TRAY	N/A	N/A	N/A	ABOVE CEILING	REFER TO FLOOR PLANS FOR SIZE OF CABLE TRAY
 CATV	CATV OUTLET	(1) RG-59	1"	2 GANG	AS NOTED ON PLANS	
 CATV	VIDEO VISITATION OUTLET	(1) CAT 6 UTP	1"	2 GANG	18" UNO	
 CATV	WIRELESS ACCESS POINT OUTLET	(2) CAT 6 UTP	1"		CEILING	

ABBREVIATIONS

AFC	ABOVE FINISHED CEILING
AFF	ABOVE FINISHED FLOOR
AV	SPECIFICATION
AWG	AMERICAN WIRE GAUGE
BFC	BAG SERVICE SITE
BH	BAGGAGE HANDLING SYSTEM
BLDG	ROOM
BMS	AUDIOVISUAL
C, COND	CONDUIT
CAB	CABINET
CASS	CARD ACCESS SECURITY SYSTEM
CAT	CATEGORY
CBP	CUSTOMS AND BORDER PATROL
CCTV	CLOSED CIRCUIT TELEVISION
CR	COMMUNICATIONS ROOM OR CARD READER
CUP	CENTRAL UTILITY PLANT
DEMARC	DEMARICATION POINT
DWG	DRAWING
EC	BUILDING
EVIDS	ELECTRONIC VISUAL INFORMATION DISPLAY...
FUTP	FOILED UNSHIELDED TWISTED PAIR
FO	FIBER OPTIC
FOPP	FIBER OPTIC PATCH PANEL
FT	BUILDING MANAGEMENT SYSTEM
FTU	FIBER TERMINAL UNIT
G, GRD	GROUND
GEN	GENERAL
GW	GATEWAY
ICR	INTERMEDIATE COMMUNICATIONS ROOM
IN	INCHES
IP	KILOWATT
KVA	ELECTRICAL CONTRACTOR
KW	FEET
LAN	LOCAL AREA NETWORK
MAX	BELOW FINISHED CEILING
MC	MEDIA CONVERTER
MCR	MAIN COMMUNICATIONS ROOM
MIN	MINIMUM
MM	MULTIMODE FIBER OPTIC CABLE
MTD	INTERNET PROTOCOL
NA	NOT APPLICABLE
NIC	OUTSIDE DIAMETER
NO, #	KILOVOLT- AMPERE
NTS	NOT TO SCALE
OD	NOT IN CONTRACT
OSP	OUTSIDE PLANT
PA	PUBLIC ADDRESS
PB	PULL BOX
PKG	PARKING
PVC	POLY-VINYL CHLORIDE
PWR	MAXIMUM
QTA	QUICK TURN AROUND
RCT	RAMP CONTROL TOWER
RM	MOUNTED
RSS	NUMBER
RU	RACK MOUNT UNIT
SCE	SOUTH CONCOURSE EAST
SCS	STRUCTURED CABLING SYSTEM
SEC	SECURITY
SM	SINGLE-MODE FIBER OPTIC CABLE
SPEC	POWER
STS	SHARED TENANT SERVICES
TBD	TO BE DETERMINED
TE	TELECOMMUNICATIONS ENCLOSURE
TRM	TERMINAL BUILDING
TSA	TRANSPORTATION SECURITY ADMINISTRATION
TV	TELEVISION
Typ	TYPICAL
UON	UNLESS OTHERWISE NOTED
UPS	UNINTERRUPTIBLE POWER SUPPLY
UTP	UNSHIELDED TWISTED PAIR
VA	VOLT-AMPERES
VSS	VIDEO SURVEILLANCE SYSTEM
WP	WEATHER PROOF

GENERAL NOTES

1. THE CONTRACTOR SHALL BE RESPONSIBLE FOR ALL THE WORK DESCRIBED IN THE DRAWINGS AND PROJECT MANUAL, AND ANY ADDENDA AND SHALL BE REFERRED TO AS THE CONTRACTOR.
2. THE CONTRACTOR SHALL COORDINATE WITH THE ARCHITECTURAL DRAWINGS AND SITE CONDITIONS FOR THE EXACT LOCATION OF ALL EQUIPMENT TRANSPORTATION. IF ANY SITUATION BROUGHT TO THE ATTENTION OF THE ENGINEER WHO SHALL APPROVE ANY DEVIATIONS FROM THE CONSTRUCTION DOCUMENTS PRIOR TO THE COMMENCEMENT OF THE WORK. FINAL EQUIPMENT COLOR AND FINISH SELECTIONS SHALL BE REVIEWED AND APPROVED BY THE DESIGN TEAM.
3. IF THE DIVISION 27 GENERAL, CONDITIONS AND PROJECT GENERAL CONDITIONS DIFFER ON THE SAME POINT, THE STRICTEST DEFINITION AND/OR INTERPRETATION SHALL GOVERN.
4. NOTES AND GRAPHIC REPRESENTATIONS ON THE DRAWINGS SHALL NOT LIMIT THE EXTENT OF THE WORK REQUIRED. THE CONTRACTOR SHALL PROVIDE A COMPLETE, FULLY COMMISSIONED AND FUNCTIONAL INFORMATION TRANSPORT SYSTEM IN CONFORMANCE WITH THE SPECIFICATIONS. QUESTIONS REGARDING THE INTENT OF THE DESIGN SHALL BE BROUGHT TO THE ATTENTION OF THE DESIGN TEAM.
5. THE ORIENTATION OF SYMBOLS ON THE DRAWINGS REPRESENT THE GENERAL MOUNTING LOCATION AND ORIENTATION OF THE DEVICE. THE CONTRACTOR SHALL PROMPTLY NOTIFY THE ENGINEER PRIOR TO THE INSTALLATION OF ANY WORK IF THE LOCATION NOTED ON THE DRAWINGS IS OBSTRUCTED OR IS IN CONFLICT WITH THE WORK OF OTHER TRADES.
6. ALL ELECTRICAL, FIRE AND LIFE SAFETY CODES SHALL BE STRICTLY ADHERED TO. IF NATIONAL, STATE AND/OR CITY CODES DIFFER ON THE SAME POINT, THE STRICTEST DEFINITION AND/OR INTERPRETATION SHALL BE FOLLOWED.
7. ALL CONDUIT, PENETRATIONS, JUNCTION AND PULL BOXES, ENCLOSURES AND WIRE/CABLE MANAGEMENT INCLUDING ALL SUPPORTS AND APPURTENANCES SHALL BE PROVIDED BY THE CONTRACTOR.
8. THE CONTRACTOR SHALL VERIFY THE SIZE OF ALL CONDUIT BASED ON THE DEVICE WIRING AND INTENDED USE. THE MAXIMUM CONDUIT FILL SHALL BE 40%.
9. THE INFORMATION TRANSPORT SYSTEM CONDUIT RISER SHALL HAVE AN ACCESS POINT ON EACH FLOOR AS A MINIMUM.
10. ALL CONDUIT SHALL BE RUN PARALLEL TO OR AT RIGHT ANGLES FROM STRUCTURE. ALL CONDUIT SHALL BE CONCEALED IN WALLS, UNDER FLOORS OR ABOVE CEILINGS. THE USE OF EXPOSED CONDUIT IS NOT ALLOWED EXCEPT IN EQUIPMENT ROOMS.
11. THE CONTRACTOR SHALL INSTALL BUSHINGS AT THE ENDS OF ALL CONDUIT TO PREVENT DAMAGE TO WIRE AND CABLE DURING AND AFTER INSTALLATION.
12. WHERE CONDUITS PASS THROUGH FIRE RATED, FIRE RESISTANT AND/OR FIRE STOPPED FLOORS AND WALLS, THE CONTRACTOR SHALL PROVIDE SLEEVES THAT ARE LISTED FOR SUCH USES OR THE PRODUCTS OF COMBUSTION. SLEEVES SHALL BE SIMILAR TO NELSON FLAME SEAL, OR AS APPROVED BY THE DESIGN TEAM.
13. WHERE CONDUITS PASS THROUGH EXTERIOR WALLS, THE CONTRACTOR SHALL WATERPROOF THE PENETRATION TO MAINTAIN THE ORIGINAL ENVIRONMENTAL RATING AND LEVEL OF PROTECTION FROM THE INFILTRATION OF MOISTURE.
14. THE CONTRACTOR SHALL BOND AND GROUND ALL CONDUITS
15. THE CONTRACTOR SHALL ENSURE THAT THE BEND RADIUS OF CONDUIT UNDER 2" SHALL BE AT A MINIMUM 6 TIMES THE OUTSIDE DIAMETER OF THE CONDUIT. THE CONTRACTOR SHALL ALSO ENSURE THAT NO INSTALLED RUN OF CONDUIT HAS MORE THAN 180 DEGREES OF TOTAL BENDS.
16. THE CONTRACTOR SHALL COORDINATE THE INSTALLATION OF CONDUIT THROUGH NON-ACCESSIBLE AREAS AND ASSIST OTHER TRADES WITH LOCATING ACCESS PANELS WHERE NECESSARY.
17. THE CONTRACTOR SHALL MAINTAIN SEPARATE CONDUIT RUNS FOR 120 VAC POWER AND SIGNAL LEVEL LOW VOLTAGE CABLING.
18. THE CONTRACTOR SHALL NOT EXERT PULLING FORCE IN EXCESS OF THE MAXIMUM TENSILE FORCE ALLOWED BY THE MANUFACTURER OF THE WIRE OR CABLE BEING INSTALLED. THE USE OF MECHANICAL TUGGERS IS STRICTLY PROHIBITED.
19. THE CONTRACTOR SHALL INSTALL ALL INFORMATION TRANSPORT SYSTEM WIRE AND CABLE IN CONDUIT FROM THE DEVICE LOCATION TO A POINT ABOVE ACCESSIBLE CEILINGS WHERE THE TRANSITION TO BASKET TYPE CABLE TRAY IS PERMITTED.
20. WIRING FOR THE SYSTEM SHALL BE CONSISTENTLY COLOR CODED, TAPPED AND LABELED. THE CONTRACTOR SHALL LABEL ALL WIRE AND CABLE PER ANSI/TIA/EIA-606A. LABELS SHALL BE MACHINE PRINTED, NOT HAND WRITTEN LABELS ARE PERMITTED. LABELS SHALL BE INSTALLED WITHIN 6" OF EACH END OF A WIRE OR CABLE AND THE LABEL SHALL MATCH THAT OF THE TERMINATION POINT OF THAT CABLE.
21. ALL WORK SHALL CONFORM TO THE REQUIREMENTS OF THE 2014 NATIONAL ELECTRICAL CODE.
22. WHERE SHIELDED CABLE IS REQUIRED THE CONTRACTOR SHALL MAINTAIN THE METALLIC CONTINUITY OF THE SHIELD FOR THE ENTIRE LENGTH OF THE CABLE. THE CONTRACTOR SHALL ISOLATE THE SHIELD FROM GROUND FOR THE LENGTH OF THE RUN AND THE CONTRACTOR SHALL GROUND ONE END OF THE SHIELD ONLY IN COMPLIANCE WITH ARTICLE 250 OF THE NATIONAL ELECTRICAL CODE.
23. THE CONTRACTOR SHALL ENSURE THAT ALL TERMINATION EQUIPMENT IS SPECIFICALLY DESIGNED AND SUITED FOR THE TERMINATION OF THE WIRE AND/OR CABLE TYPE AND SIZE BEING USED FOR EACH APPLICATION.
24. THE CONTRACTOR SHALL PROVIDE AN INFORMATION TRANSPORT SYSTEM SPECIFIC TO THE ADMINISTRATIVE LAN. THIS INFORMATION TRANSPORT SYSTEM SHALL SUPPORT THE ADMINISTRATIVE COMPUTER NETWORK AND AV SYSTEMS AND IT SHALL BE MAINTAINED SEPARATE FROM THE SEGMENTED USER WORK SYSTEMS.
25. THE CONTRACTOR SHALL ACCOMMODATE THE INCIDENTAL MOVEMENT OF A FIELD DEVICE AS DIRECTED BY THE ENGINEER UP TO 10' WITHOUT ADDITIONAL COST PROVIDED THE ROUGH IN HAS NOT COMMENCED.

TELECOMMUNICATION SHEET INDEX	
SHEET NUMBER	DRAWING TITLE
TT7001	TELECOMMUNICATIONS SYMBOLS, ABBREVIATIONS AND GENERAL NOTES
TT101C	NOTATION FLOOR PLAN - GROUND LEVEL - AREA -A- TELECOMMUNICATION
TT102A	NOTATION FLOOR PLAN - GROUND LEVEL - AREA -A- TELECOMMUNICATION
TT102D	NOTATION FLOOR PLAN - GROUND LEVEL - LEVEL -C- TELECOMMUNICATION
TT201C	CELL TIER LEVEL - AREA -A- TELECOMMUNICATION
TT501	TELECOMMUNICATIONS DETAILS
TT502	TELECOMMUNICATIONS DETAILS
TT601	BLOCK DIAGRAM
TT602	CONDUIT LAYOUT
Grand total: 9	

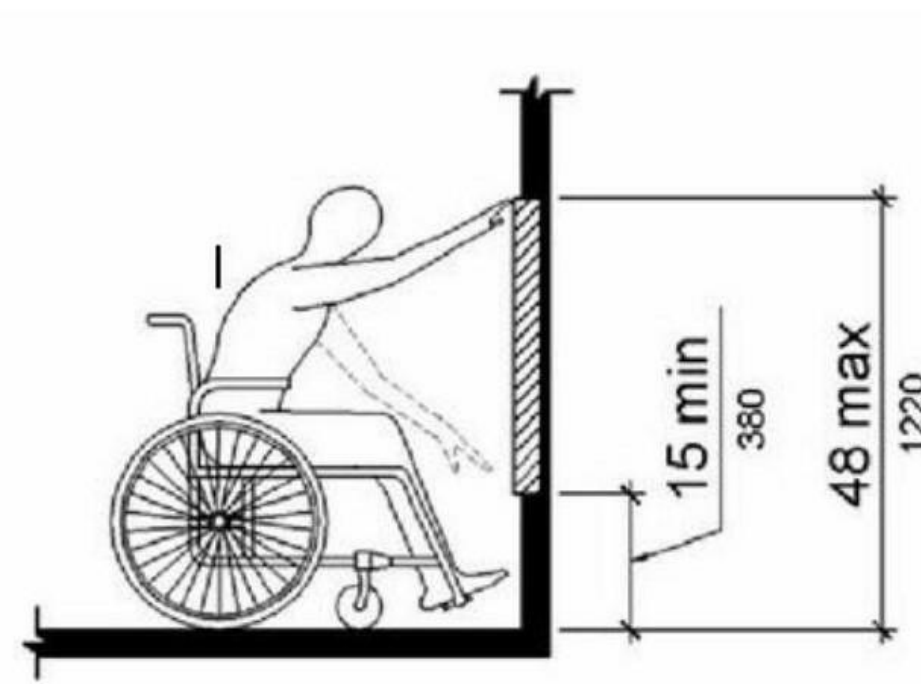


Figure 308.2.1
Unobstructed Forward Reach

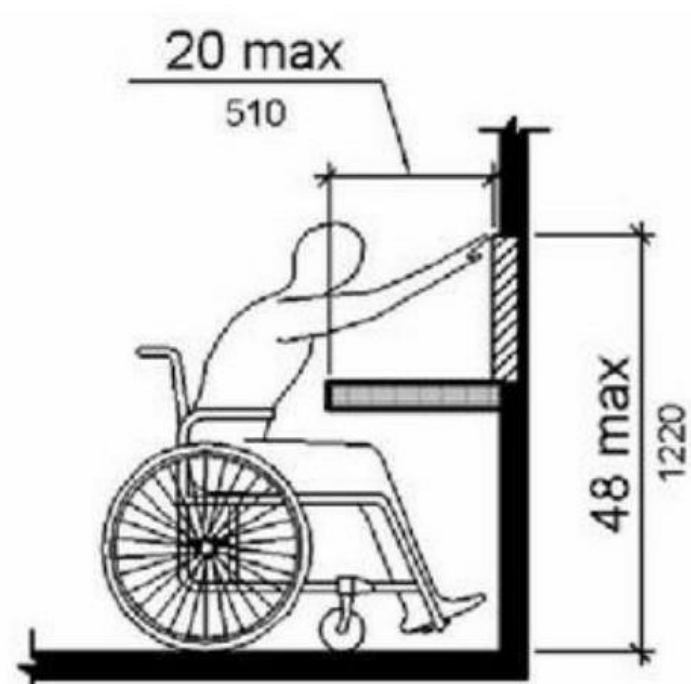


Figure 308.2.2
Obstructed High Forward Reach

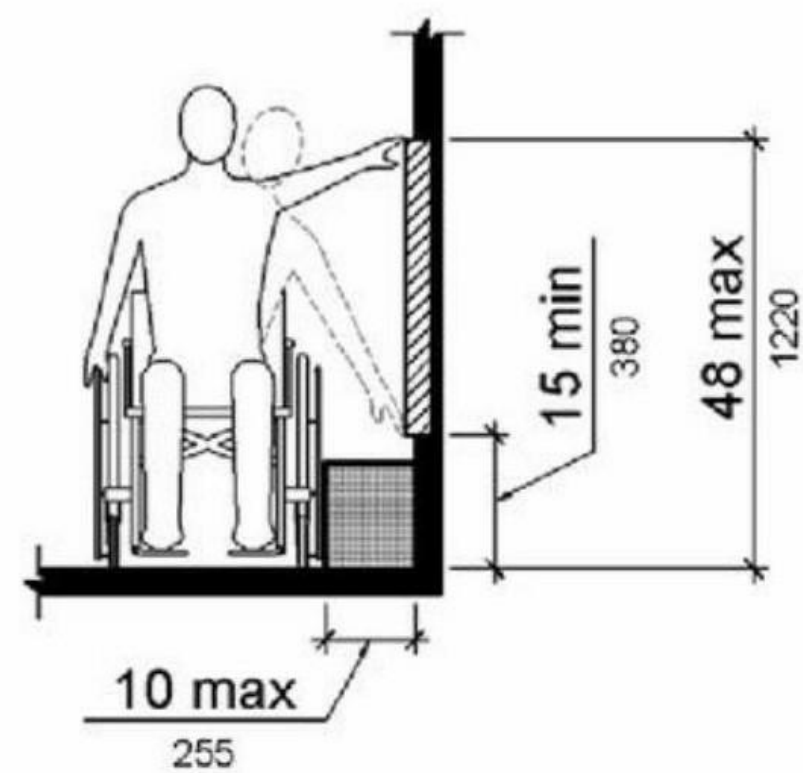
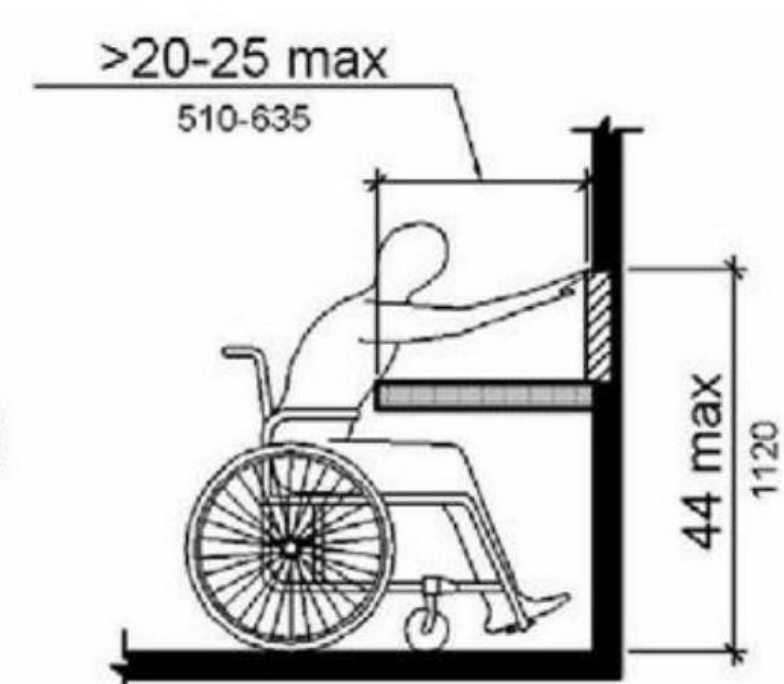


Figure 308.3.1
Unobstructed Side Reach

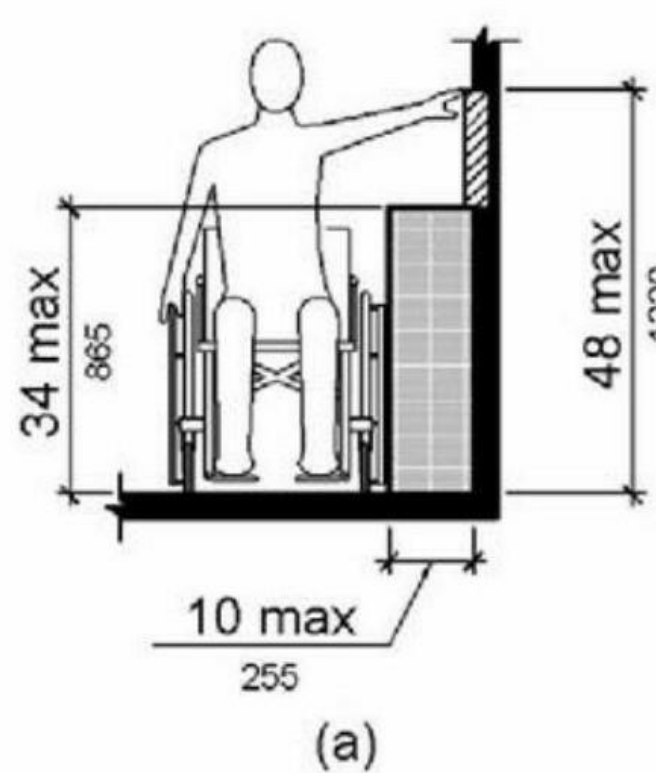


Figure 308.3.2
Obstructed High Side Reach

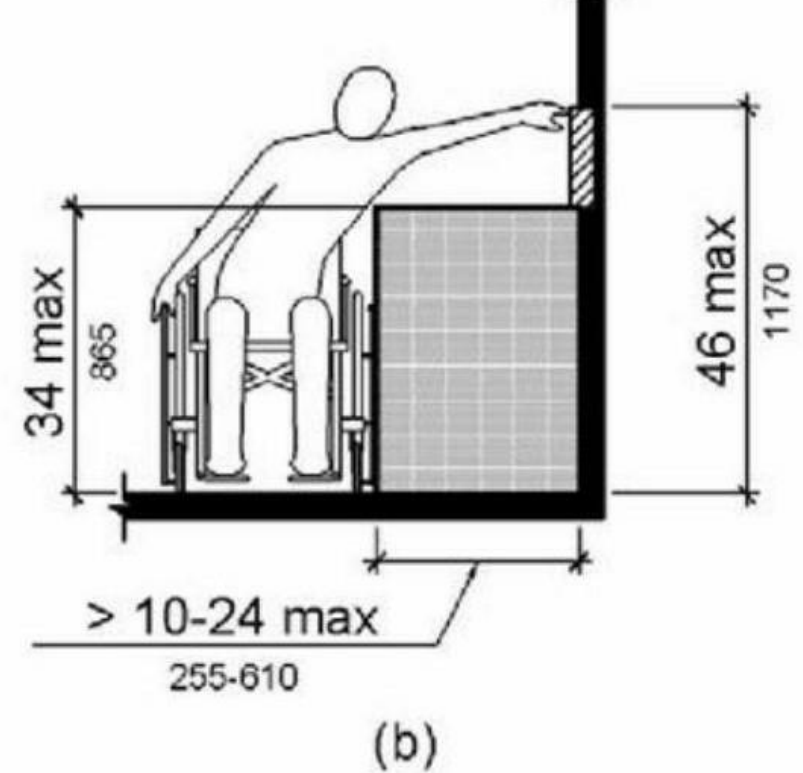


Figure 307.2
Limits of Protruding Objects



Project
**SHELBY COUNTY JAIL
EXPANSION**
380 MCDOW ROAD,
COLUMBIANA, ALABAMA 35051

Prepared For
SHELBY COUNTY, AL
200 WEST COLLEGE STREET
COLUMBIANA, ALABAMA 35051



10 South Broadway, Suite 200
St. Louis, MO 63102 USA
t +1 314 421 2000 f +1 314 421 6073
HOK Architects, Inc.
Architecture, Security, IT & AV Design

All reproduction & intellectual property rights reserved © 2022
In Association with

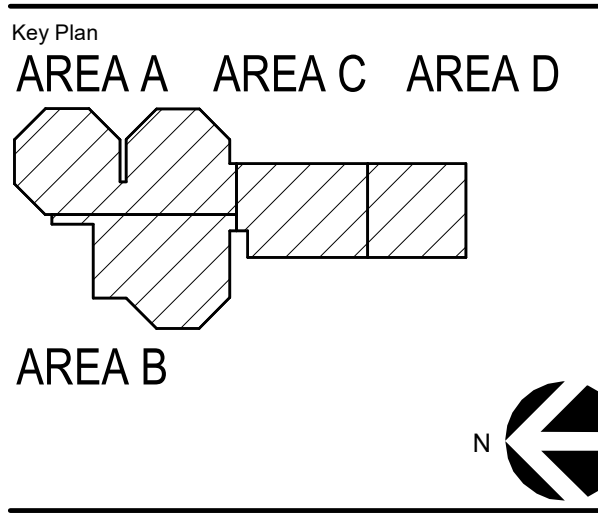


GOODWYN MILLS CAWOOD
Architect of Record/Civil
2400 5th Avenue South, Suite 200, Birmingham, AL 35233
Telephone: 334-687-7441

TUCKER-JONES ENGINEERS
Structural
3300 Cahaba Road, Suite 210, Birmingham, Alabama 35244
Telephone: 205-879-5660

MW/DAVIS DUMAS & ASSOCIATE
Mechanical/Fire Protection/Plumbing
4500 Southlake Park Suite 200, Hoover, Alabama 35244
Telephone: 205-252-0246

JACKSON RENFRO & ASSOCIATES
31 Inverness Center Parkway, Suite 300, Birmingham, AL
Telephone: 205-995-1078



No.	Description	Date
	100% CONSTRUCTION DOCUMENTS	2023-06-1
1	Addendum #4	2023-07-2

Project No: 21.01020.00

Sheet Title

TELECOMMUNICATIONS SYMBOLS, ABBREVIATIONS AND GENERAL NOTES

Original drawing is 48 x 36 Do not scale contents of this drawing

Sheet Number

TT001



GENERAL NOTE:
A. ALL SCOPE ON SHEET IS ALTERNATE #1.

Project
SHELBY COUNTY JAIL
EXPANSION
380 MCDOW ROAD,
COLUMBIANA, ALABAMA 35051

Prepared For
SHELBY COUNTY, AL
200 WEST COLLEGE STREET
COLUMBIANA, ALABAMA 35051



10 South Broadway, Suite 200
St. Louis, MO 63102 USA
f +1 314 421 2000 f +1 314 421 6073
H&K Architects, Inc.
Architecture, Security, IT & AV Design

All reproduction & intellectual property rights reserved © 2022

In Association with

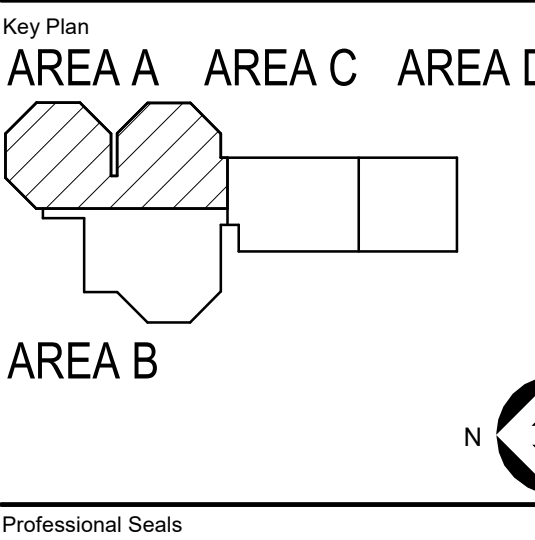


GOODWYN MILLS CAWOOD
Architect of Record/CIP
2400 5th Avenue South, Suite 200, Birmingham, AL 35233
Telephone: 205-887-7441

TUCKER-JONES ENGINEERS
Structural
3300 Cahaba Road, Suite 210, Birmingham, Alabama 35223
Telephone: 205-979-9553

MW/DAVIS DUMAS & ASSOCIATES
Mechanical/Electrical/Plumbing
4500 Southlake Park Suite 200, Hoover, Alabama 35244
Telephone: 205-952-0246

JACKSON RENFRO & ASSOCIATES
31 Inverness Center Parkway, Suite 300, Birmingham, AL 35242
Telephone: 205-955-1078



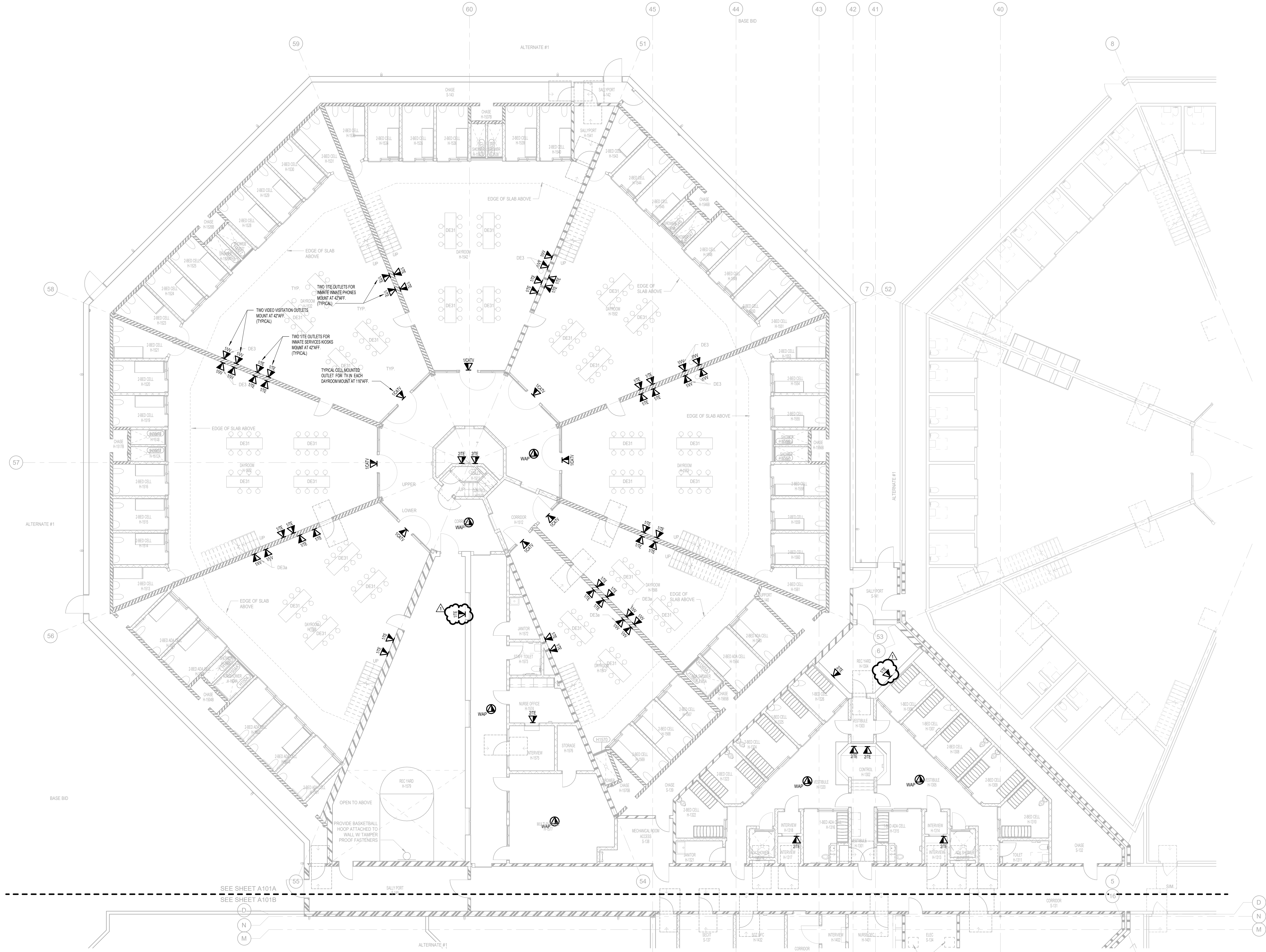
No.	Description	Date
100%	CONSTRUCTION DOCUMENTS	2023.06.17
1	ADDENDUM #1	2023.07.24

Project No: 21.01020.00
Sheet Title:

NOTATION FLOOR PLAN - GROUND
LEVEL - AREA A -
TELECOMMUNICATION

Original drawing is 48 x 36. Do not scale contents of this drawing.
Sheet Number:

TT101C



NOTATION FLOOR PLAN - GROUND LEVEL - AREA A -
TELECOMMUNICATION
1/8" = 1'-0"